

Wafer type swing check valve



Size	40mm-400mm (1½ "-16")
Working pressure	0.1mbar-16bar
Temperature range	-29° C ~200° C according to working condition , other temperatures on request
Design and Manufacture	API 594
Face to Face	ASME B16.10 DIN EN558.1 JIS B2002
Flange Ends	ASME B16.5 DIN 2532 JIS B2212 (150LB, 10K, PN10,PN16)
Visual Inspection	MSS Sp54
Testing	API 598 DIN 3230 JIS B2003
Pressure & Temperature	ASME B16.34
Spark testing	14kv

■ Valve characteristic

The PFA lined swing check valve we designed comes with a retaining ring , which prevents the valve disc from falling off during transportation and installation , and also eliminates the need for pipeline flange as baffles with high integration. Free sealing can be achieved without any system pressure, and the valve disc can swing freely without jamming.

Standard SUS304 lifting ring for easy lifting between flanges.

The PFA lining is tightly integrated with the valve body, and we choose the unique "dovetail groove" type. Its resistance to vacuum and thermal expansion is unmatched by other groove types.

Using epoxy resin spraying, with a thickness greater than 250um. Customers can customize different colors.

The valve disc is lined with metal and PFA to improve strength while preventing disc rupture when suddenly closed.

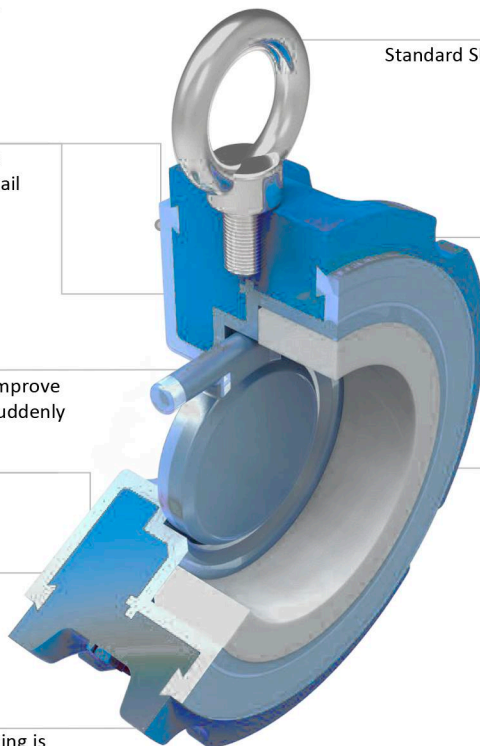
Through 14kv spark detection, it can be used in highly corrosive situations.

Pure PTFE serves as a retaining ring, making it easy to replace and maintain when worn.

The inner wall is smooth and free from dead corners, stains, and residues, making it very suitable for medical, semiconductor, food hygiene and other equipment.

The minimum thickness of PFA is 3mm, and the part in contact with the fluid will be thicker to ensure a longer service life

Adopting a semi lug design, precise positioning is achieved when connecting bolts, making installation convenient and fast.

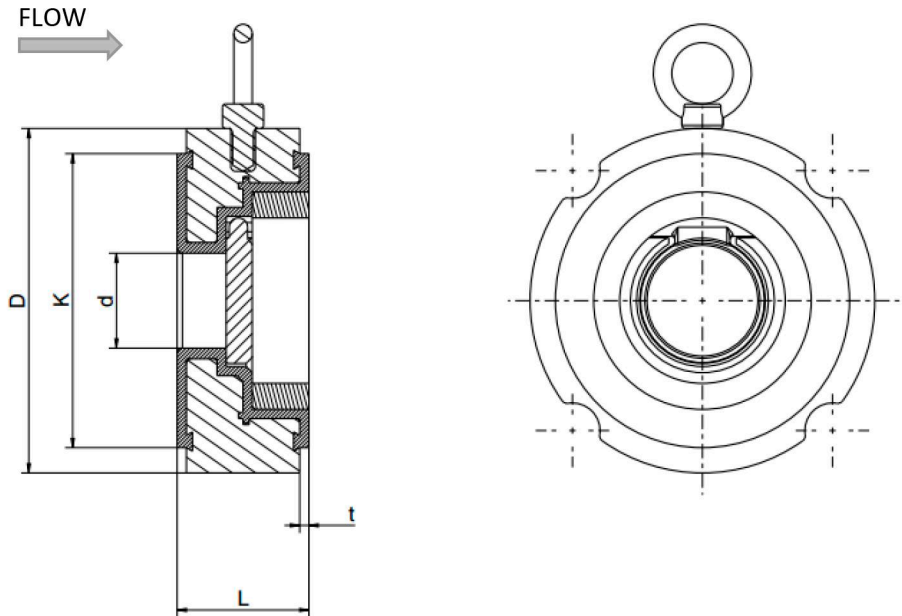


Explosion diagram



Material selection

NO	Description	Qty.	Materials	Materials According to Norms		
				ASTM	JIS	DIN
1	BODY	1	Carbon Steel	A216-WCB	G5151 SCPH2	GS-45(1.0446)
			Stainless Steel	A351-CF8	G5121 SCS13A	G-X6CrNiMo1810
			Ductile Iron	ASTM A395	FCD400	GGG-40 (0.7040)
2	BODY LINED	1	PFA/FEP/ETFE			
3	DISC	1	Carbon Steel+PFA/FEP/ETFE	A216-WCB	G5151 SCPH2	GS-45(1.0446)
			Stainless Steel+PFA/FEP/ETFE	A351-CF8	G5121 SCS13A	G-X6CrNiMo1810
4	RETAINER RING	1	PTFE	--	--	--
5	HAND RING	1	Stainless Steel	A182 F304	G4303-SUSF304	X5CrNi18 10 DIN1.4301
6	NUT	1	Stainless Steel	A182 F304	G4303-SUSF304	X5CrNi18 10 DIN1.4301



DN		SIZE (mm)					Weight
mm	in	L	d	K	D	t	[kg]
40	1½	33	21	78	92	3.5	1.8
50	2	43	31	96	122	3.5	2.5
65	2½	46	43	115	132	3.5	3
80	3	46	52	126	144	3.5	4.5
100	4	52	68	151	170	3.5	6.5
125	5	56	85	182	203	3.5	8.2
150	6	56	107	212	233	3.5	10.5
200	8	60	147	262	290	4	16.8
250	10	68	188	322	350	4	28
300	12	78	233	372	400	4	42
350	14	78	275	415	460	4.5	60
400	16	102	305	476	525	4.5	99

