

VÁLVULAS DE BOLA / BALL VALVES

VALVULA DE BOLA DE 3 VIAS EN ACERO CARBONO. PN16. BRIDAS DIN PN-16
3-WAYS BALL VALVE IN CARBON STEEL. PN16. FLANGED DIN NP-16

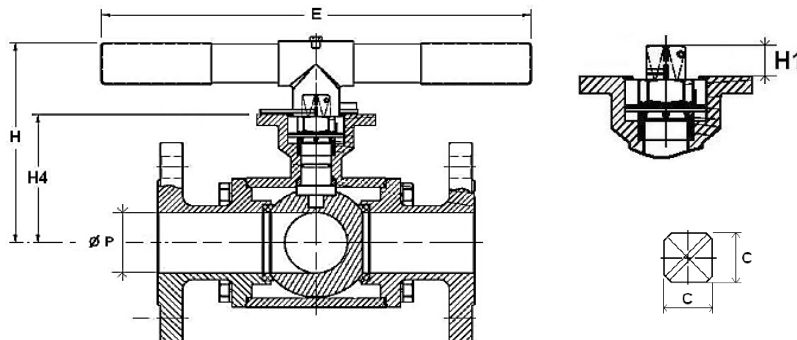
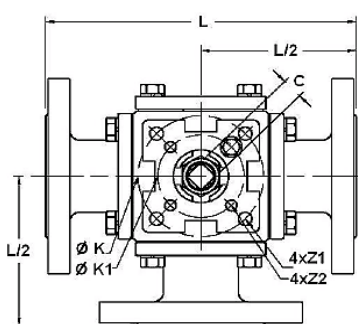


VALVESEAL
valves & sealing solutions

TF-3WBV-CS-F

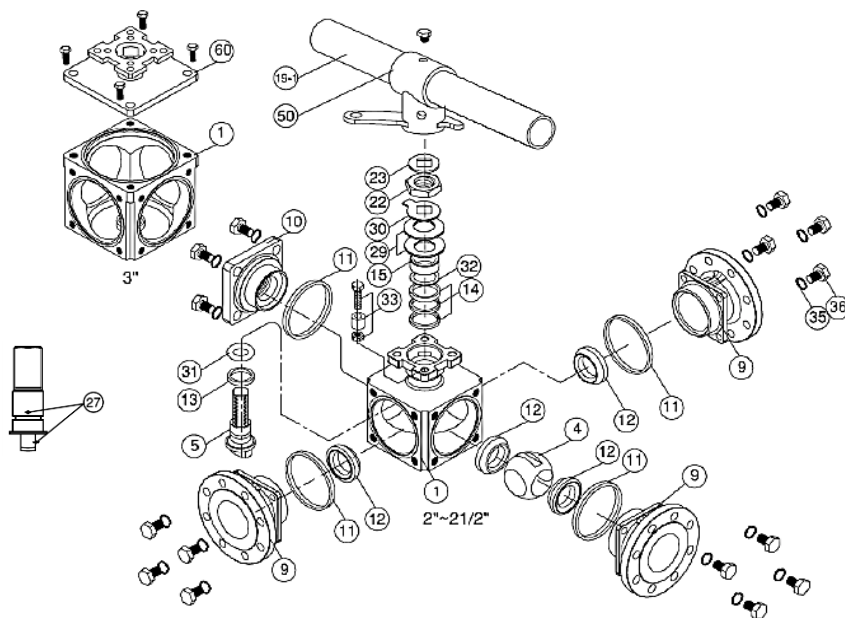
DIMENSIONES / DIMENSIONS DN50 - DN80:

DN ND	ØP	L	L/2	E	H	H1	H4	C	ØK	ØK1	ISO	ISO 1	4xZ1	4xZ2	Par Torque	Kvs	Peso Weight
50	50	253	127	400	155	17,8	106	17	102	70	F10	F07	4 x 11	4 x 9	126	131	19,00
65	65	270	135	400	166	17,5	117	17	102	70	F10	F07	4 x 11	4 x 9	174	228	23,50
80	76	292	146	400	174	17,5	128	17	102	70	F10	F07	4 x 11	4 x 9	210	311	34,50



MATERIALES / CONSTRUCTION DN50 - DN80:

No.	Pieza Part	Material Material
1	Cuerpo Body	Acero A216 WCB Steel A216 WCB
4	Bola Ball	A.Inox A351 CF8 S.Steel A351 CF8
5	Eje Stem	A.Inox AISI304 S.Steel 304
9	Extremos Ends	Acero A216 WCB Steel A216 WCB
10	Tapa Cap	Acero A216 WCB Steel A216 WCB
11	Junta cuerpo Body seal	PTFE
12	Asiento Seat	PTFE + 15% GV
13	Arandela Thrust washer	PTFE
14	Empaquet. Eje Stem Packing	PTFE
15	Prensa Gland	A.Inox AISI304 S.Steel 304
19-1	Palanca Handle	Hierro Iron
22	Tuerca eje Stem Nut	A.Inox AISI304 S.Steel 304
23	Arandela palanca Handle washer	A.Inox AISI304 S.Steel 304
27	Disp. Antiestático Antistatic device	A.Inox AISI316 S.Steel 316
29	Arandela Elastic washer	A.Inox AISI410 S.Steel 410
30	Arandela Stop washer	A.Inox AISI304 S.Steel 304
31	Junta Torica O-Ring	FKM
32	Empaquetadura Packing follower	PTFE + 15% Grafoil
33	Pasador Stop Pin	A.Inox AISI304 S.Steel 304
35	Arandela tornillo Bolt washer	A.Inox AISI304 S.Steel 304
36	Tornillo Bolt	A.Inox AISI304 S.Steel 304
50	Adaptador palanca Handle adapter	A.Inox A351 CF8 S.Steel A351 CF8



Las especificaciones del producto están sujetas a modificaciones sin previo aviso. The specifications of the presented products are open to modifications without previous advice.

VÁLVULAS DE BOLA / BALL VALVES

VALVULA DE BOLA DE 3 VIAS EN ACERO CARBONO. PN16. BRIDAS DIN PN-16
3-WAYS BALL VALVE IN CARBON STEEL. PN16. FLANGED DIN NP-16

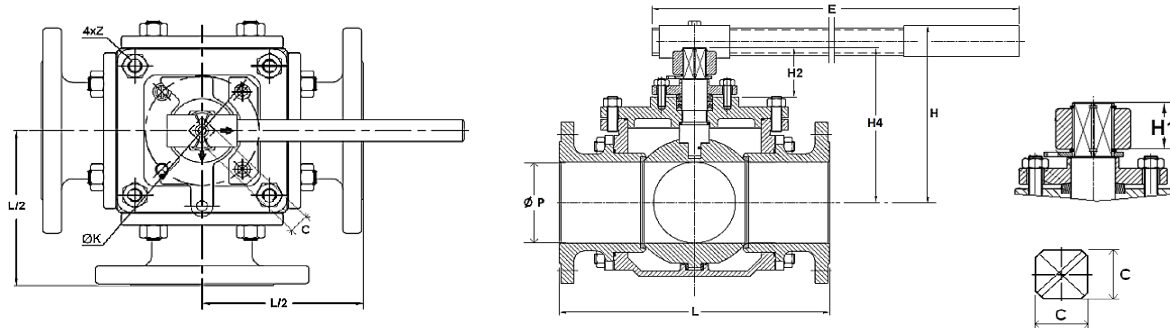


VALVESEAL
valves & sealing solutions

TF-3WBV-CS-F

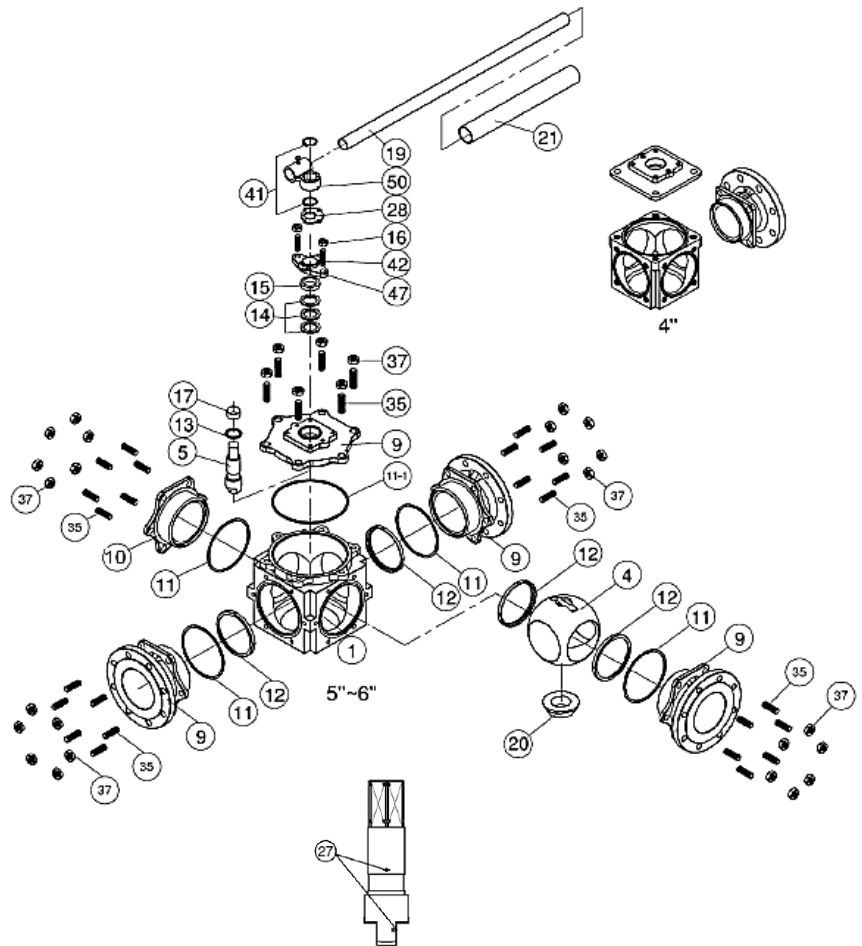
DIMENSIONES / DIMENSIONS DN100 - DN150:

DN ND	ØP	L	L/2	E	H1	H2	H4	H	C	ØK	ISO	4xZ	Par Torque	Kvs	Peso Weight
100	100	360	180	600	33	70	193	212	27	125	F12	4 x M12 x 1,75	290	554,7	67,40
125	125	46	208	600	33	70	233	261	27	125	F12	4 x M12 x 1,75	572	893,3	95,00
150	150	473	237	800	43,5	77,5	266	284	36	140	F14	4 x M12 x 2	924	1329	124,00



MATERIALES / CONSTRUCTION DN100 - DN150:

No.	Pieza Part	Material Material
1	Cuerpo Body	Acero A216 WCB Steel A216 WCB
4	Bola Ball	A.Inox A351 CF8 S.Steel A351 CF8
5	Eje Stem	A.Inox AISI304 S.Steel 304
9	Extremos Ends	Acero A216 WCB Steel A216 WCB
10	Tapa Cap	Acero A216 WCB Steel A216 WCB
11	Junta cuerpo Body seal	PTFE
11-1	Junta superior Top seal	PTFE
12	Asiento Seat	PTFE + 15% GV
13	Arandela Thrust washer	PTFE
14	Empaquet. Eje Stem Packing	PTFE
15	Cojinete Prensa Gland Bush	A.Inox AISI304 S.Steel 304
16	Tuerca Prensa Gland Nut	A.Inox AISI304 S.Steel 304
17	Cojinete Eje Stem Bushing	PTFE
19	Palanca Handle	Hierro Iron
20	Tornillos Bolts	A.Inox AISI304 S.Steel 304
21	Funda palanca Handle cover	Plastico Plastic
27	Disp. Antiestático Antistatic device	A.Inox AISI316 S.Steel 316
28	Placa cierre Stop Plate	A.Inox AISI304 S.Steel 304
35	Tornillo Bolt	A.Inox AISI304 S.Steel 304
37	Tornillo blocante Bolt Nut	A.Inox AISI304 S.Steel 304
41	Aro retencion Snap ring	A.Inox AISI304 S.Steel 304
42	Tornillo Prensa Gland Bolt	A.Inox AISI304 S.Steel 304
47	Brida Prensa Gland Flange	A.Inox A351 CF8 S.Steel A351 CF8
50	Adaptador palanca Handle adapter	A.Inox A351 CF8 S.Steel A351 CF8



The specifications of the presented products are open to modifications without previous advice.

Las especificaciones del producto están sujetas a modificaciones sin previo aviso.

VÁLVULAS DE BOLA / BALL VALVES

VALVULA DE BOLA DE 3 VIAS EN ACERO CARBONO. PN16. BRIDAS DIN PN-16
3-WAYS BALL VALVE IN CARBON STEEL. PN16. FLANGED DIN NP-16



VALVESEAL
valves & sealing solutions

TF-3WBV-CS-F

POSIBILIDAD DE POSICIONES / POSSIBLE POSITIONS

PASO EN L / L PORT

Posibilidad de dos posiciones consecutivas / Only two consecutive positions are available :

Position L1	Position L2	Position L3	Position L4	Position L5

PASO EN T / T PORT

Posibilidad de dos posiciones consecutivas / Only two consecutive positions are available :

Position T1	Position T2	Position T3	Position T4	Position T5

TABLA PRESION-TEMPERATURA / PRESSURE-TEMPERATURE CHART

